



INSPIRATIVNI PRIMJER INTEGRIRANOG TERITORIJALNOG RAZVOJA EUROPSKOG GRADA VARŠAVE – KLJUČNE INVESTICIJE U FUNKCIONALNOM PODRUČJU VARŠAVE

Pawel Sajnog, glavni specijalist u Uredu za europske fondove i politike razvoja, Grad
Varšava, Poljska



Integrated
Territorial Investments
for Greater Warsaw

An inspirational example of integrative territorial development in Poland – ITIs in the Warsaw Functional Area



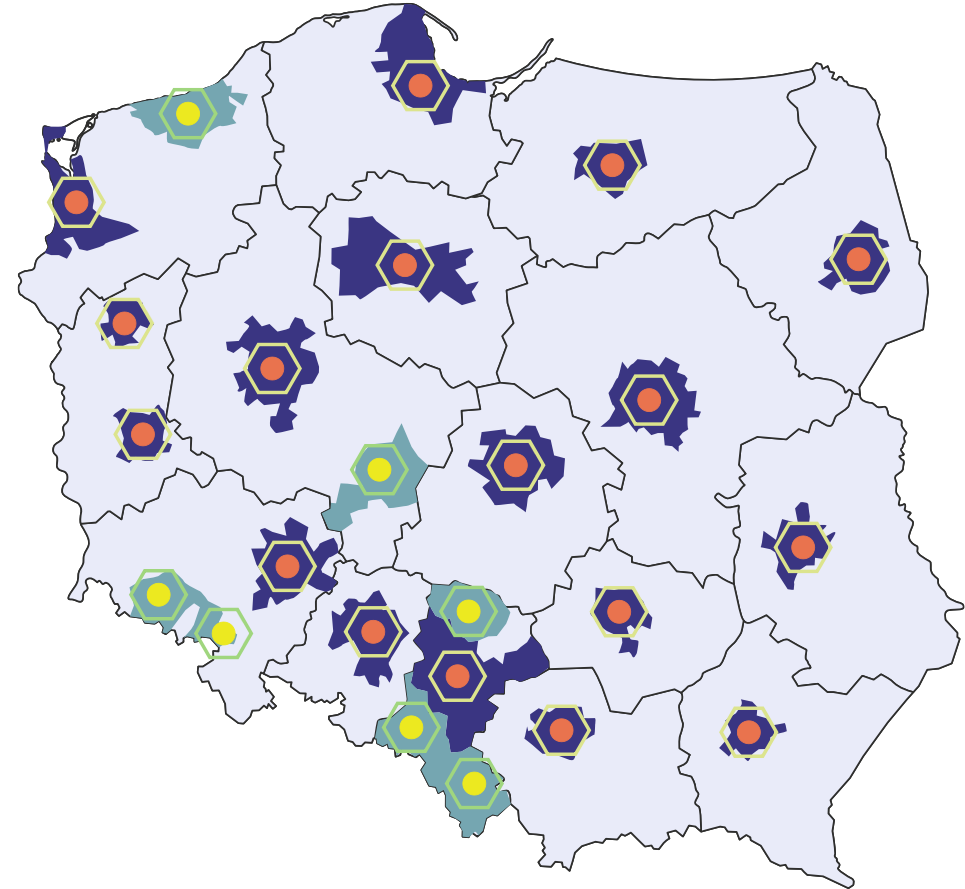
Key conditionalities of implementing ITIs in Poland

- obligatory for all 18 regional capital cities (dedicated allocation), voluntary for sub-regional cities (facultative allocation)
- formalization of the local governments' cooperation (associations/agreements)
- elaboration of the ITI Strategies and their acceptance by the MAs and the Ministry
- agreement on the ITI implementation with the MAs (Marshals' Offices)
- NUTS division not corresponding with the functional areas' delimitation



Key conditionalities of implementing ITIs in Poland

- 17 regional capitals' functional areas
- 7 additional („sub-regional”) functional areas
- 3.8 bln EUR from EU structural funds (ERDF + ESF) through the regional OPs
- additional allocation through the national OPs (Cohesion Fund + ERDF): 2.4 bln EUR (only for the regional capitals' FAs, „complementary” projects)



source: Zintegrowane Inwestycje Terytorialne - nowe rozwiązania dla miast w polityce spójności na lata 2014-2020, MliR, wrzesień 2015



Initial situation in the Warsaw metropolis

- communes cooperate within the county borders (or bilateral with Warsaw)
- cooperation as an option - after using the capacity of a single municipality
- low level of trust towards Warsaw
- limited interest in implementing the new tool („*let's just split the money*”)



Main challenges



overcoming the barrier of mistrust towards Warsaw



the identification of common and acceptable development goals



rising the awareness of the benefits of working together (the success of the entire area as the success of each municipality)



Warsaw Functional Area

Number of municipalities: 40

Population: 2.7 mln (over 50% of Mazovia Region)

Area: 2.900 square km (8% of Mazovia Region)



167 078 706 €

– the amount provided for projects within the Integrated Territorial Investments in the Regional Operational Programme for the Mazowieckie Voivodeship 2014-2020

271 244 490 €

– the amount supplementing the ITI resources provided for projects in the field of low-emission public transport and effective heating system, in the Operational Programme Infrastructure and Environment 2014-2020

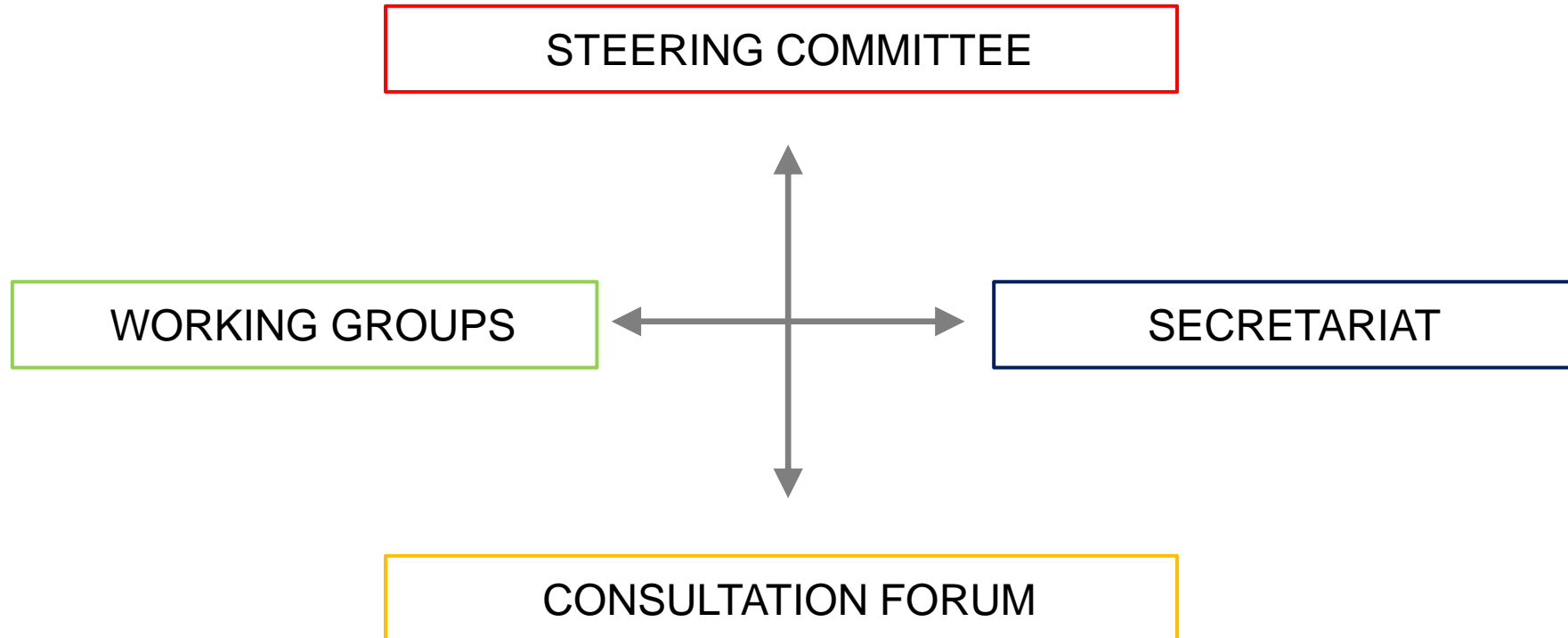


ITI Partnership

- **The agreement of municipalities of Warsaw Functional Area on cooperation in the implementation of the Integrated Territorial Investments in the EU financial perspective 2014-2020**
- The agreement defines the organizational structure of the WFA ITI, the tasks of individual bodies of the WFA ITI and the role of Capital City of Warsaw as the leader of ITI and Intermediate Body for ITI



Organisational structure



ITI Strategy process

- Strategy developed by officials
 - ✓ conscious decision ensuring attachment to the ITI Strategy
 - ✓ cooperation with all 40 communes: workshops, consultations, remarks, etc.
 - ✓ experts' support: workshops moderation, evaluation
- over 2 years of work
(September 2013 – November 2015)
- four versions of the Strategy (changes in PA and ROP, remarks of Managing Authority and the Ministry)



ITI Strategy objectives

The Strategy for the Integrated Territorial Investments for the Warsaw Functional Area 2014-2020+ focuses on achieving three strategic objectives:

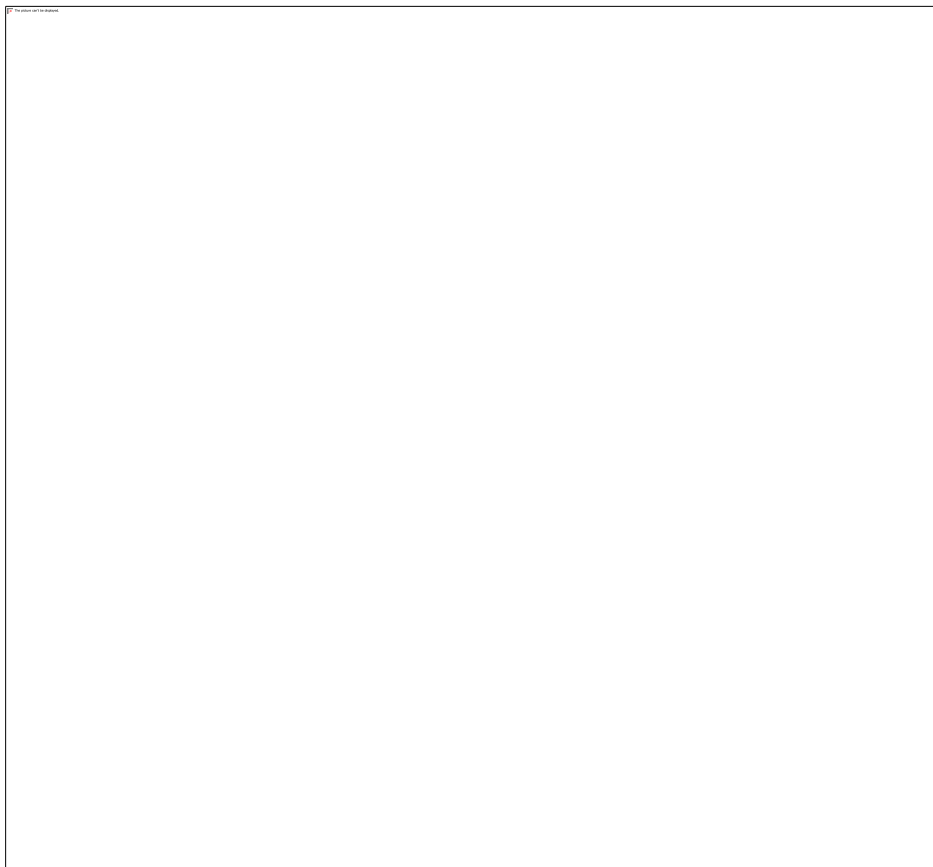
- 1. Increasing the access to public services**
- 2. Developing economic networks**
- 3. Improving the quality of public space**



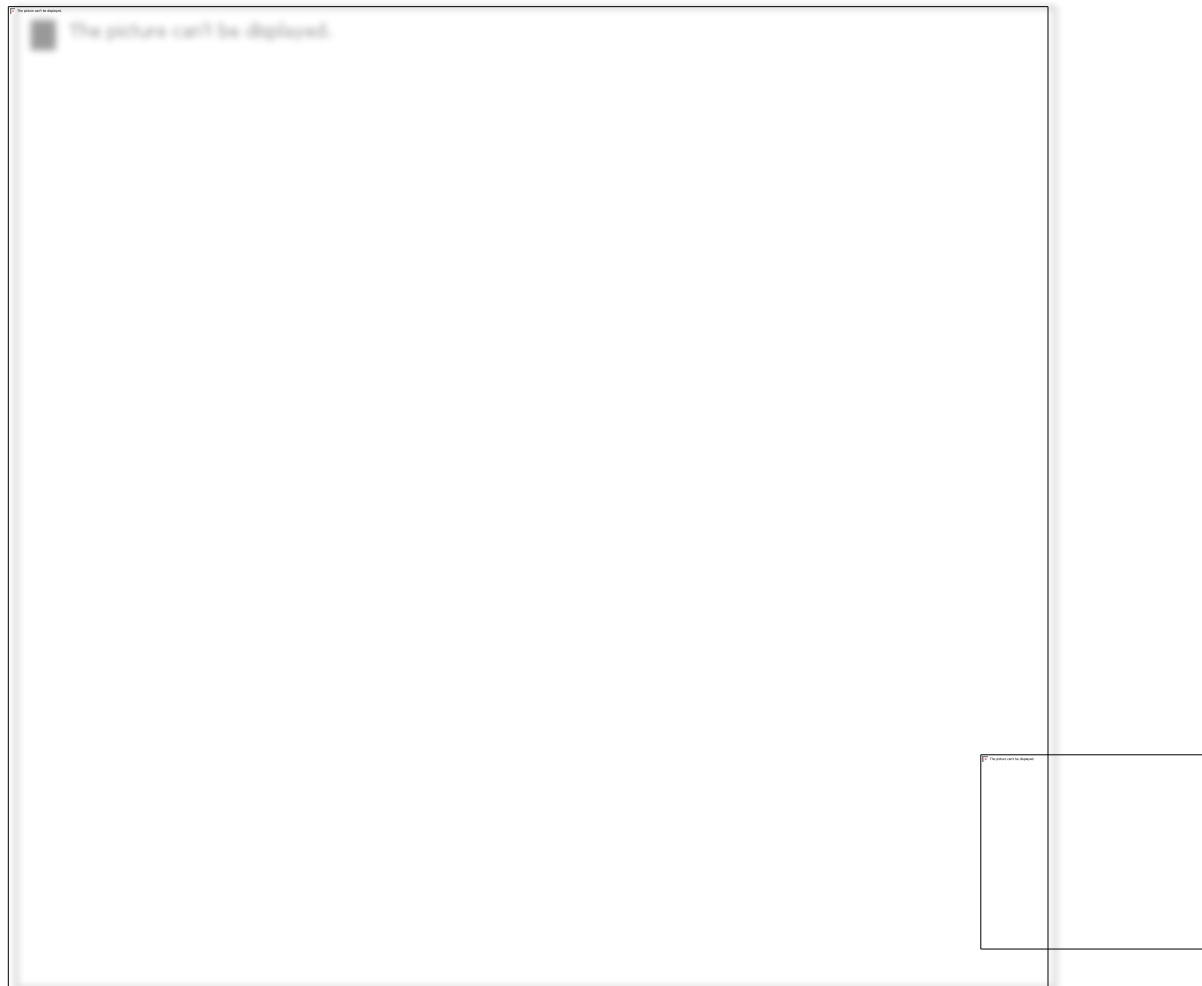
Projects co-financed with European Union funds, contracts signed in the period: XI 2016 – IX 2021

Territorial distribution of EU funding within ITIs (end of 2020)

Co-financing of projects



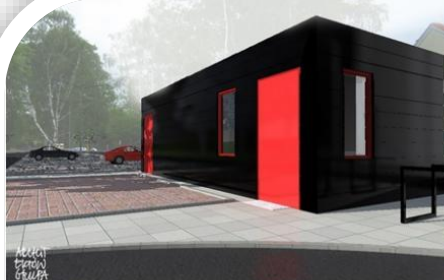
EU funding obtained under ITI instrument per capita







 **Parkuj Jedź**



Where are we now: change of approach & success factors

- Warsaw considered as a threat →
Warsaw considered as a partner
- cooperation as a necessity
→ cooperation for benefits
→ cooperation as a value
- neighbours (me and others) →
community (we)
- ✓ having common and specified goals
- ✓ sticking to the arrangements
- ✓ getting to know each other



New statistical division of the Mazovian Voivodeship

Commission Regulation (EU) 2016/2066 of 21 November 2016, amending the NUTS division (in force from January 2018)

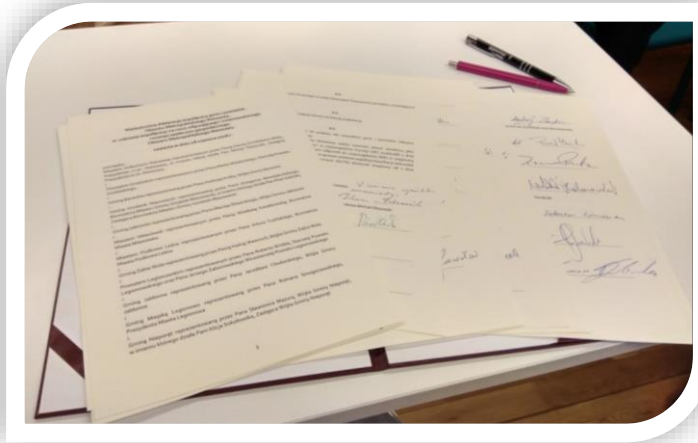
New statistical division effects

- EC acceptance for taking into account the NUTS 2 new division thanks to the data availability + changing the reference period (2015-2017)
- new „Warsaw metropolitan area” delimitation
- expulsion of the previous delimitations, based on different factors
- „metropolitan” envelope in the Operational Programme for the Mazovian Voivodeship 2021-2027
- chance for developing the metropolitan cooperation, not necessarily dependent on the EU funding



June 2018: signing the cooperation agreement within the NUTS 2 level area (Warsaw Capital Region/Warsaw metropolis)

Multilateral declaration of cooperation between communes and counties of Warsaw metropolis in scope of inclusive and sustainable social and economic development



Challenges concerning ITIs & integrated territorial development in the period 2021-2027

- extending the scope of thematic cooperation beyond the sphere of ITIs' implementation
- broadening the area of cooperation from 40 to 70 municipalities (new statistical NUTS division of Mazovian Voivodeship in force from 2018)
- new approach of the government towards supporting the largest cities/FAs in the financial perspective 2021-2027



